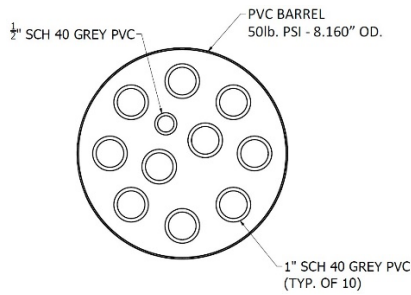


## ENZO INSULATED WALL SLEEVE (11-PIPE)

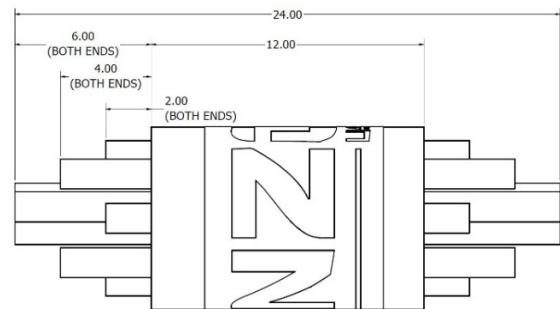
<b>Job Name:</b>	<b>Contractor:</b>
<b>Engineer:</b>	<b>Representative:</b>

### SPECIFICATIONS

▪ **Side View**



▪ **Section View**

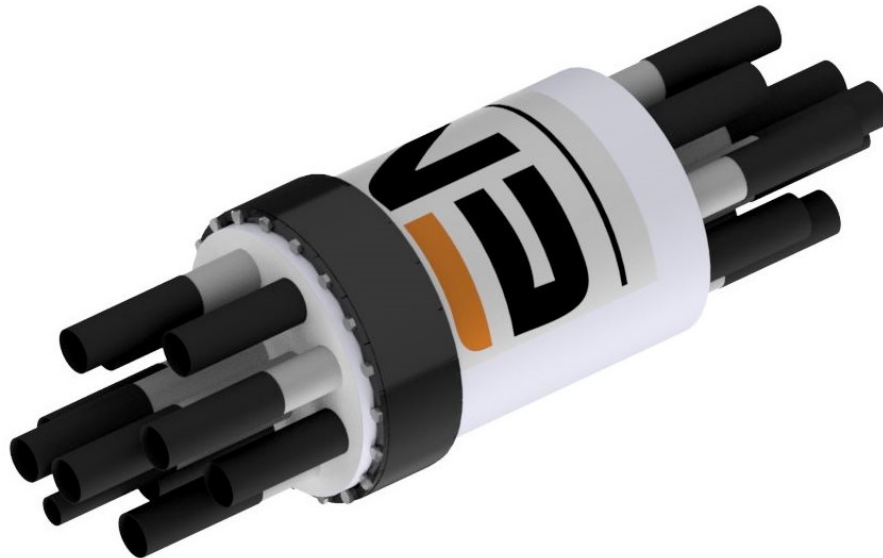


▪ Above or below grade, up to 20' below grade

▪ Closed cell foam insulation

- 1" diameter SCH 40 PVC tube x 10
- 1/2" diameter SCH 40 PVC pipe x 1

▪ 8.160" diameter outer sleeve, 50 lb. PVC Barrel, White



**ENZO™ WALL SLEEVE CUSTOMIZATIONS**

**OPTIONS:** *(Please check option choices below)*

<input type="checkbox"/> <b>Option #1:</b> PVC Outer Sleeve Sch 40 PVC	<input type="checkbox"/> <b>Option #2:</b> 1" Shrink tubes <i>(Specify quantity, typically 2 qty per conduit)</i>
<input type="checkbox"/> <b>Option #3:</b> Linkseal <i>(Specify exact core cut dimensions)</i>	<input type="checkbox"/> <b>Option #4:</b>

**ADDITIONAL OPTIONS:** *(Please indicate custom sizes below)*

<b>Length of Outer Sleeve</b> <i>(12" unless specified)</i>	<b># of PVC Conduits</b> <i>(14, unless specified)</i>	<b>Caps</b> <i>(for unused conduits)</i>	<b>Heat Shrink Tubes</b> <i>(2 per conduit)</i>	<b>Linkseal</b> <i>(match to dimensions of core cut)</i>

**PROJECT INFORMATION:** *(Please indicate additional details below)*